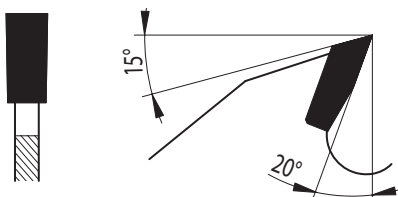
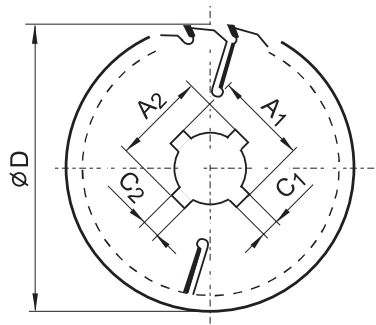


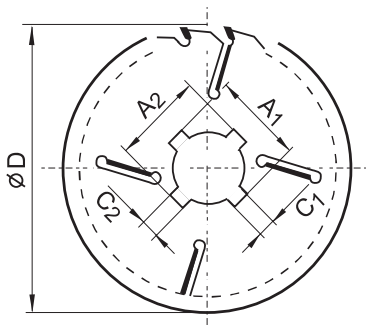
94 FZ +2

D	S	s	d	z	h _{max}	d _{p max}	●/○		1	1	2	2
250	3,6	2,5	70,80	16+2	50	130	●	70	13x80	20x83		
300	4,0	2,8	70,80	18+2	70	130	●	75	13x80	20x83		
315	4,0	2,8	80	18+2	80	130	●	80	14x90	22x93		
350	4,0	2,8	70,75,80	20+2	100	135	●					
400	4,0	2,8	70,80	24+2	110	185	●					



94.1 FZ +2+2

D	S	s	d	z	h _{max}	d _{p max}	●/○	Otvor	C1xA1	C2xA2
250	3,2	2,2	70,80	16+2+2	65	105	●	70	13x80	20x83
300	3,2	2,2	70,80	18+2+2	85	120	●	75	13x80	20x83
300	3,2	2,2	30	24+2+2	85	120	●	80	14x90	22x93
315	3,2	2,2	70,80	18+2+2	90	120	●			
350	3,6	2,5	70,75,80	20+2+2	110	120	●			
400	4,0	2,8	30	18+2+2	120	145	●			
400	4,0	2,8	70,80	24+2+2	120	145	●			
450	4,4	3,2	70,80	20+2+2	140	160	●			
450	4,4	3,2	30	28+2+2	140	160	●			
500	4,4	3,2	30	22+2+2	155	180	●			
500	4,4	3,2	70	28+2+2	155	180	●			



$$d_{\max} = d_{p \max} - 30 \text{ mm}$$

D -

h_{max} -

[mm], S -

[mm], d_{p max} -

[mm], s -

[mm], d -

[mm], d_{max} -

[mm], z -

[mm]



94.1 FZ +2+2+2

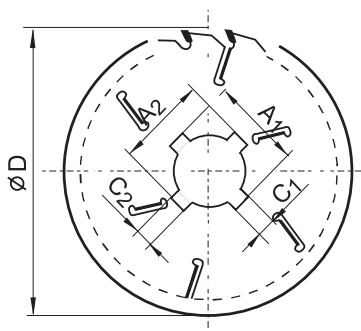
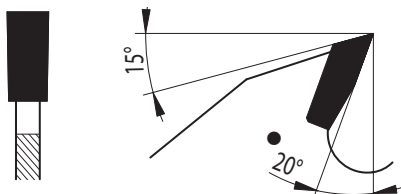
:

»

» 6

»

D	S	s	d	z	h _{max}	d _{p max}	●/○		1	1	2	2
400	4,0	2,8	30	24+2+2+2	130	125	●	80	14x90	22x93		
450	4,4	3,2	30	20+2+2+2	140	130	●					
450	4,4	3,2	80	28+2+2+2	155	130	●					
500	4,4	3,2	30	22+2+2+2	180	130	●					
500	4,4	3,2	80	28+2+2+2	180	130	●					
550	5,0	3,5	30	24+2+2+2	195	150	●					
550	5,0	3,5	30	32+2+2+2	195	150	●					
600	5,0	3,5	30	26+2+2+2	210	170	●					
600	5,0	3,5	30	34+2+2+2	210	170	●					



5394.2 LFZ

:

»

»

»

D	B	b	d	z	h _{max}	d _{p max}	●/○
250	3,2	2,2	30	18+3	60	115	●
300	3,2	2,2	30	18+3	75	130	●
350	3,6	2,5	30	20+2+2	100	105	●
400	4,0	2,8	30	24+2+2	120	120	●

$$: d_{\max} = d_{p \max} - 30 \text{ mm}$$

D -
h_{max} -

\[mm], S -
\[mm], d_{p max} -

\[mm], s -

\[mm], d -
\[mm], d_{max} -

\[mm], z -
\[mm]

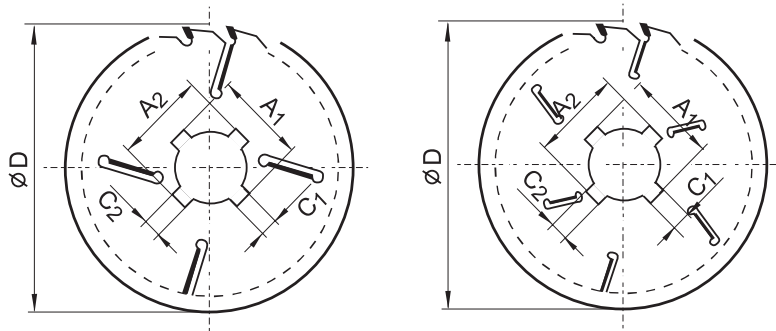
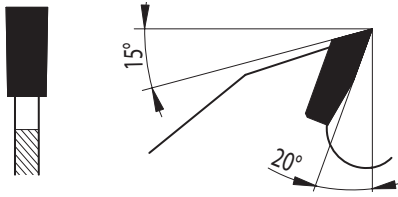


94.1 FZ – MASSIVE

»

»

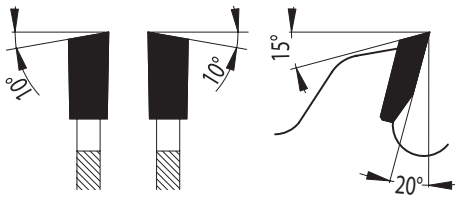
D	S	s	d	z	h _{max}	d _{p max}	●/○		1	1	2	2
315	4,0	2,8	70,80	18+2+2	90	120	●	70	13x80	20x83		
350	4,0	2,8	70,75,80	20+2+2	110	120	●	75	13x80	20x83		
400	4,2	3,0	30	20+2+2	120	145	●	80	14x90	22x93		
450	5,0	3,5	30	20+2+2	140	160	●					
500	5,0	3,5	30	22+2+2+2	180	130	●					
550	5,5	3,5	30	24+2+2+2	195	150	●					
600	6,2	4,0	30	26+2+2+2	210	170	●					
700	6,5	4,5	30	28+2+2+2	240	210	●					
800	7,5	5,0	30	26+2+2+2+2	310	170	●					



»

»

D	S	s	d	z	h _{max}	d _{p max}	●/○
300	5,0	3,5	30	18+2+2	90	105	●
320	5,0	3,5	30	18+2+2	100	105	●
350	5,0	3,5	30	18+2+2	115	105	●



$$d_{\max} = d_{p \max} - 30 \text{ mm}$$

D -
h_{max} -

[mm], S -
[mm], d_{p max} -

[mm], s -

[mm], d -
[mm], d_{max} -

[mm], z -
[mm]

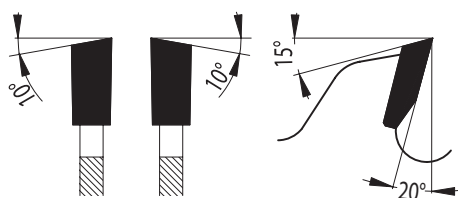


94.1 WZ – EFFECTIVE

»
»
»

WZ

D	S	s	d	z	h _{max}	d _{p max}	●/○
250	2,7	1,8	30	20+2+2	65	110	●
300	2,7	1,8	30	24+2+2	85	120	●
350	3,5	2,5	30	24+2+2+2	110	120	●

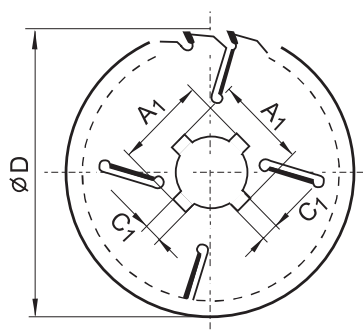
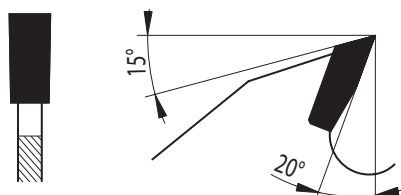


94.1 FZ – TOS, RAIMANN, COSTA

»
»

"TOS SVITAVY"

D	S	s	d	z	h _{max}	d _{p max}	●/○	Otvor	4x C1xA1
300	3,2	2,2	80	18+2+2	90	105	●	80	13x90
320	3,2	2,2	80	18+2+2	100	105	●		
350	4,0	2,8	80	18+2+2	115	105	●		
400	4,0	2,8	80	20+2+2	140	105	●		
450	4,4	3,2	80	24+2+2	165	105	●		



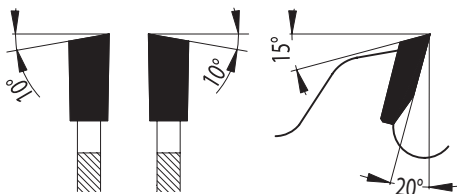
D -
h_{max} -

[mm], S -
[mm], d_{p max} -

[mm], s -

[mm], d -
[mm], d_{max} -

: d_{max} = d_{p max} - 30 mm
[mm], z -
[mm]



94.1 WZ – TOS, RAIMANN, COSTA

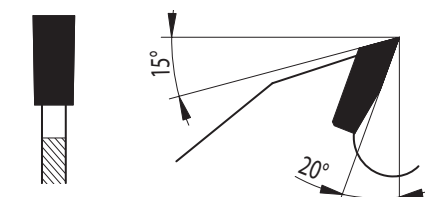
»

"TOS SVITAVY"

»

» WZ

D	S	s	d	z	h _{max}	d _{p max}	●/○
300	3,2	2,2	30	18+2+2	90	105	●
320	3,2	2,2	30	18+2+2	100	105	●
350	3,6	2,5	30	18+2+2	115	105	●
400	3,6	2,5	30	20+2+2	140	105	●
450	4,0	2,8	30	24+2+2	165	105	●



94.1 FZ -

»

»

»

STROJCAD

D	S	s	d	z	h _{max}	●/○
450	5,0	3,5	30 + 6/17/96	20+2+2	160	●
450	5,0	3,5	55 + 6/17/112	20+2+2	145	●
500	5,0	3,5	30 + 6/17/96	22+2+2+2	185	●
500	5,0	3,5	55 + 6/17/112	22+2+2+2	170	●
550	5,5	3,5	30 + 6/17/96	24+2+2+2	210	●
550	5,5	3,5	55 + 6/17/112	24+2+2+2	190	●
700	6,5	4,5	55 + 8/17/172	28+2+2+2	240	●

WEP

D	S	s	d	z	h _{max}	●/○
500	5	3,5	30+8/11/100+2/10/60	22+2+2+2	170	●
550	5,5	3,5	30+8/11/100+2/10/60	24+2+2+2	190	●
500	5	3,5	30+8/11/150+2/10/60	22+2+2+2	150	●
550	5,5	3,5	30+8/11/150+2/10/60	24+2+2+2	170	●

D -
h_{max} -

[mm], S -
[mm], d_{p max} -

[mm], s -

[mm], d -
[mm], d_{max} -

[mm], z -
[mm]

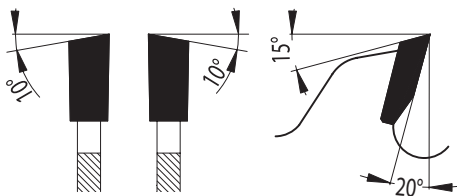


94.1 WZ -

»
»
»
»

STROJCAD

D	S	s	d	z	●/○
500	5,0	3,5	30	22+2+2+2	●
500	5,0	3,5	55	22+2+2+2	●
550	5,5	3,5	30	24+2+2+2	●
550	5,5	3,5	55	24+2+2+2	●





»

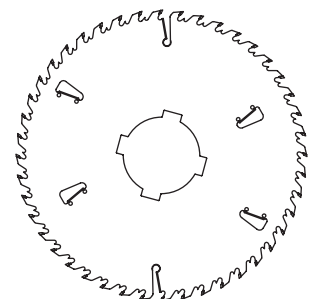
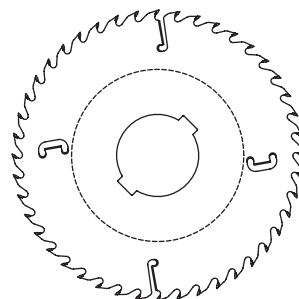
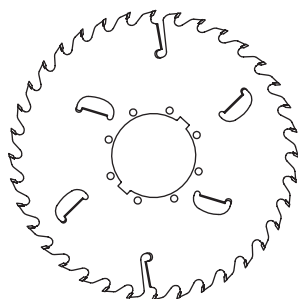
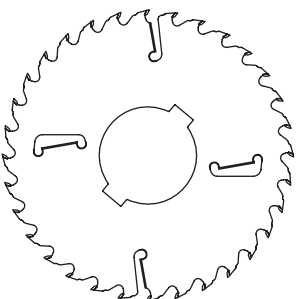
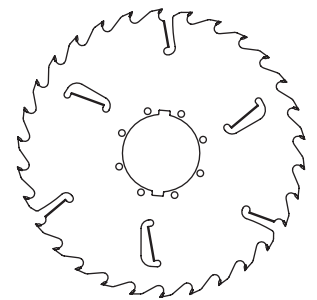
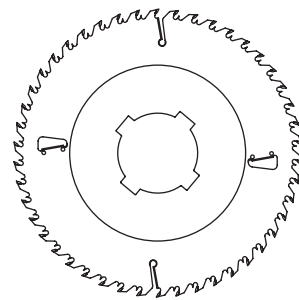
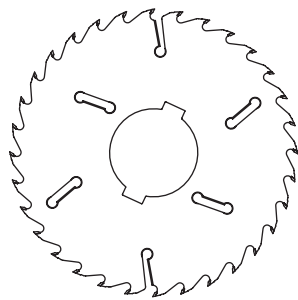
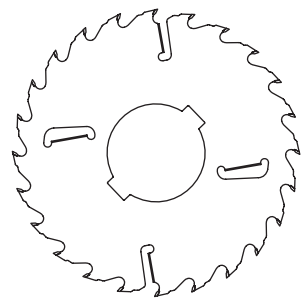
LINCK

:

LINCK

D	S	s	d _{pmax}	z	d _{max}	●/○
390	3,7	2,2-2,9	150	36+2+2	190	○
410	3,9	2,4-3,1	150	36+2+2	190	○
410	4	2,8	150	24+2+2	190	○
420	3,7	2,2-2,9	150	36+2+2	190	○
440	3,8	2,5	150	24+2+2	190	○
440	4	2,6	135	32+2+2	180	○
440	4,6	3,2	150	28+2+2	190	○
450	3,6	2,4	150	32+2+2	190	○
460	3,6	2,4	150	34+2+2	270	○
460	4	2,6	150	28+2+2	190	○
480	3,5	2,2	150	28+2+2	270	○
490	3,4	2,2	150	36+2+2+2	270	○
490	4,4	3	150	32+2+2+2	190	○
490	4,4	3	150	24+2+2	190	○
500	5	3,5	145	36+2+2+2	190	○
500	5,3	3,7	150	32+2+2	200	○
510	3,9	2,4-3,1	150	40+2+2	190	○
510	4	2,8	150	30+2+2	190	○

D	S	s	d _{pmax}	z	d _{max}	●/○
510	4,2	2,8	150	30+2+2	190	○
520	4,6	3	120	28+2+2+2	190	○
520	6	4,2	150	28+2+2+2	190	○
520	4	2,6	150	28+2+2	270	○
520	4,8	3,4	150	24+2+2	200	○
525	4,2	2,8	150	28+2+2	250	○
530	3,7	2,2-2,9	150	44+2+2	320	○
540	4,2	2,8	150	36+2+2+2	270	○
540	4,2	2,8	210	30+2+2+2	270	○
540	4,6	3,2	145	30+3+3	190	○
540	4,8	3,6	145	30+3+3	190	○
540	4,8	3,6	150	30+3+3	205	○
540	3,6	2,4-4,2	150	46+2+2	330	○
540	3,8	2,6	150	36+2+2+2	320	○
550	5	3,5	150	20+2+2+2	200	○
570	4,3	2,9-5,3	150	44+2+2+2	315	○
570	4,3	2,9	150	44+2+2+2	315	○



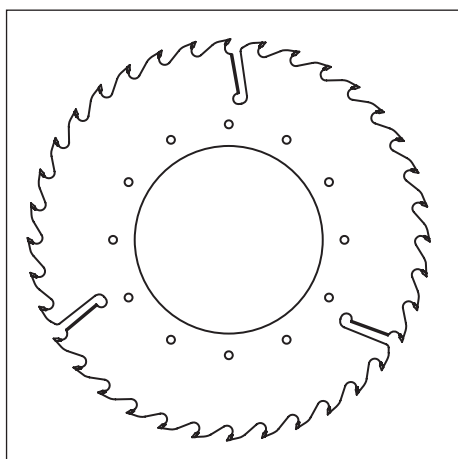
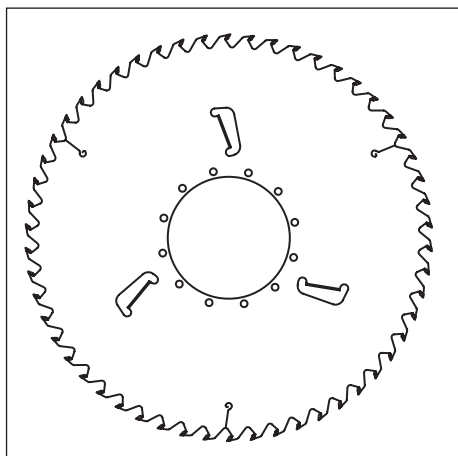
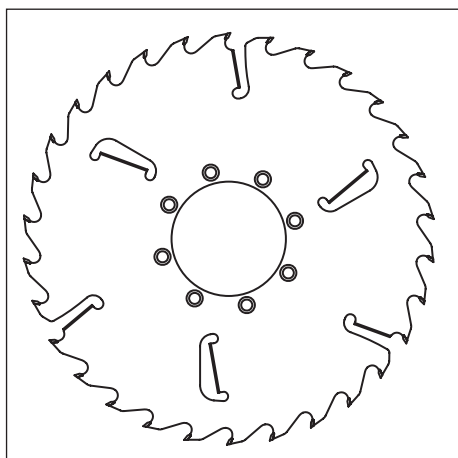
D -
h_{max} -

√[mm], S -
√[mm], d_{pmax} -

√[mm], s -

√[mm], d -
√[mm], d_{max} -

√[mm], z -
√[mm]



:

»

Heinola

D	S	s	d	z	d _{pmax}	●/○
451	4,5	3	99,2	28 + 2 + 2	168	○
540	4,6	3,2	145	30 + 3 + 3	190	○
540	4,2	2,8	210	30 + 2 + 2+2	270	○
540	4,8	3,6	145	30 + 3 + 3	190	○
540	4,8	3,6	150	30 + 3 + 3	205	○
556	3,6	2,4	260	34 + 3	370	○
556	4,2	2,8	160	32 + 2 + 2	290	○
556	4,6	3,2	160	32 + 2 + 2	240	○
556	4,6	3,2	160	30 + 2 + 2+2	240	○
600	3,6	2,4	180	54 + 3	240	○
600	3,8	2,4	180	54 + 3	240	○

D -
h_{max} -

\[mm], S -
\[mm], d_{pmax} -

\[mm], s -

\[mm], d -
\[mm], d_{max} -

\[mm], z -
\[mm]